

# Welcome to the Small Centrifuge Range

Small Centrifuges	22-23
Microtube Rotors	24-25
Haematocrit & Microtube Rotor	26
4 Place Swing Out Rotor & Adaptors	27-28
8 Place Swing Out Rotor	29
Fixed Angle Rotors	30-31
Microtiter Plate Rotor	32
Centrifuge Dimensions	33-34

## LED SMALL CENTRIFUGES TO 0.5L MAX

Centurion's Small Centrifuges accommodate up to 0.5 L of samples, offering greater flexibility than the micro range. Rotors are purchased separately, providing full versatility to support a wide range of sample sizes.



### Small LED Ambient Centrifuge

RPM	Up to 15,000 RPM (10 RPM steps)
RCF Max	10 - 22,000
Timer	0-9 hours & Hold (30 sec steps)
Dims (WxDxH)	350 x 475 x 337mm
Weight	26 Kg (without rotor)
Power	125 Watts
Memory	99 programs
Accel Rates	10 programs
Decel Rates	10 programs

#### PART NUMBERS Ambient LED Model

C-SMALL 230V 50/60Hz (previously C2000)  
 C-1.SMALL 110V 50/60Hz (previously 1.C2000)  
 Alternative plug types available.



### Small LED Refrigerated Centrifuge

RPM	15,000 RPM max (10 RPM steps)
RCF Max	10 - 22,000
Timer	0-9 hours & Hold (30 sec steps)
Dims (WxDxH)	435 x 660 x 337mm
Weight	60 Kg (without rotor)
Power	125 Watts
Memory	99 programs
Accel Rates	10 programs
Decel Rates	10 programs
Temp. Range	-10 to 40°C

#### PART NUMBERS Refrigerated LED Model

C-SMALL.R 230V 50/60Hz (previously C2000R)  
 C-1.SMALL.R 110V 60Hz (previously 1.C2000R)  
 Alternative plug types available.

## LCD SMALL CENTRIFUGES TO 0.5L MAX

Centurion also offers the small centrifuges with an LCD touchscreen, with W2t control for sensitive research applications. These centrifuges also accommodate up to 0.5 L of samples, offering greater flexibility than the micro range. Rotors are purchased separately, providing full versatility to support a wide range of sample sizes.



### Small LCD Ambient Centrifuge

RPM	Up to 15,000 RPM (10 RPM steps)
RCF Max	10 - 22,000
Timer	0-9 hours & Hold (30 sec steps)
Dims (WxDxH)	350 x 475 x 337mm
Weight	26 Kg (without rotor)
Power	125 Watts
Memory	99 programs
Accel Rates	10 programs
Decel Rates	10 programs

#### PART NUMBERS Ambient LCD Model

C-SMALL-LCD 230V 50/60Hz (previously K2015)  
 C-1.SMALL-LCD 110V 50/60Hz (previously 1.K2015)  
 Alternative plug types available.



### Small LCD Refrigerated Centrifuge

RPM	15,000 RPM max (10 RPM steps)
RCF Max	10 - 22,000
Timer	0-9 hours & Hold (30 sec steps)
Dims (WxDxH)	435 x 660 x 337mm
Weight	60 Kg (without rotor)
Power	125 Watts
Memory	99 programs
Accel Rates	10 programs
Decel Rates	10 programs
Temp Range	-10 to 40°C

#### PART NUMBERS Refrigerated LCD Model

C-SMALL.R-LCD 230V 50/60Hz (previously K2015R)  
 C-1.SMALL.R-LCD 110V 60Hz (previously 1.K2015R)  
 Alternative plug types available.

## MICROTUBE ROTORS

The Microtube Rotors are designed for the centrifugation of smaller sample sizes ranging from 0.5 ml to 2 ml, as well as PCR strips. They offer a maximum speed of 22,000 RCF, programmable in 10 RCF increments for precise control.







C-R-FA5463 with included sealed lid.



C-R-FA5463 without included sealed lid.

Rotor	C-R-FA5424	C-R-FA5494	C-R-FA5448	C-R-FA5436	C-R-FA5463
Rotor Type	24 x 2.0ml	36 x 0.5ml	48 x 0.2 to 0.4ml	4 x PCR Strips	36 x 2.2ml
Tube Size Max	11 x 40mm	8 x 30mm	6 x 40mm	6 x 40mm	11 x 50mm
RCF Range (g)	10-22,000	10-22,000	10-22,000	10-22,000	10-22,000
Maximum RPM	15,000	15,000	15,000	15,000	15,000
Max Radius (cms)	8.75cms	8.75cms	8.75cms	8.75cms	8.75cms
Sample Tube angle °	45	45	45	45	45
Acceleration Time (secs)	15	15	15	15	15
Deceleration Time (secs)	15	15	15	15	15
Min Temp @ Max Speed	4°C	4°C	4°C	4°C	4°C
Available Reducers	RS04, RS05	RS04, RS05	N/A	N/A	RS04, RS05
Sealed Lid Included?	Yes	Yes	Yes	Yes	Yes
Spare Lid Part No.	C-RL-1440	C-RL-1440	N/A	C-RL-1440	C-RL-1440
Autoclavable (frequency)	121°C (10)	121°C (10)	121°C (10)	121°C (10)	121°C (10)

Reducers	C-RC-RS04	C-RC-RS05
Capacity (ml):	0.2-0.4ml 	0.5ml 
Tube Size Max:	6 x 30mm 	8 x 30mm 

## HIGH CAPACITY MICROTUBE ROTORS

The High-Capacity Microtube Rotors are designed for users who need to centrifuge 0.5 ml, 2.2ml and PCR strips at increased volume. They offer a maximum speed of 10,500 RCF, programmable in 10 RCF increments for precise control.



*C-R-FA5348 with included sealed lid.*



*C-R-FA5348 without included sealed lid.*

Rotor	C-R-FA5348	C-R-FA5349	C-R-FA5398
Rotor Type	48 x 2.2ml	24 x 2.2 & 24 x 0.5ml	8 x PCR Strips
Tube Size Max	11 x 40mm	11x50 & 6x30mm	6 x 40mm
RCF Range (g)	10-10,500	10-10,500	10-10,500
Maximum RPM	10,000	10,000	10,000
Max Radius (cms)	9.45cms	9.45cms	9.45cms
Sample Tube Angle °	45	45	30
Acceleration Time (secs)	20	20	20
Deceleration Time (secs)	20	20	20
Min Temp @ Max Speed	0°C	0°C	0°C
Sealed Lid Included?	Yes	Yes	Yes
Spare Lid Part No.	C-RL-1720	C-RL-1720	C-RL-1720
Autoclavable (frequency)	121°C (10)	121°C (10)	121°C (10)

## HAEMATOCRIT & MICROTUBE ROTOR

The Haematocrit and Microtube Rotor spins capillary tubes and 2 ml tubes, offering maximum flexibility without the need to change rotors. It provides a maximum force of 15,800 RCF, programmable in 10 RCF increments for full control and versatility.



C-R-FA5401 with included sealed lid.

Rotor	C-R-FA5401
Rotor Type	24 x capillary & 12 x 2ml
Tube Size	2 x 75mm & 11 x 40mm
RCF Range	10-15,800
Maximum RPM	13,000
Max Radius (cms)	8.4
Sample Tube Angle °	0 & 60
Acceleration Time (secs)	25
Deceleration Time (secs)	25
Min. Temp @ Max Speed	0°C
Reducers Available	C-RC-RS04, C-RC-RS05
Sealed Lid Included?	Yes
Spare Lid Part No.	C-RL-5401
Autoclavable (frequency)	121°C (10)

Reducers - Pack of 4	C-RC-RS04	C-RC-RS05
Capacity (ml):	0.2-0.4ml	0.5ml
Tube Size Max:	6 x 30mm	8 x 30mm



## CONSUMABLES

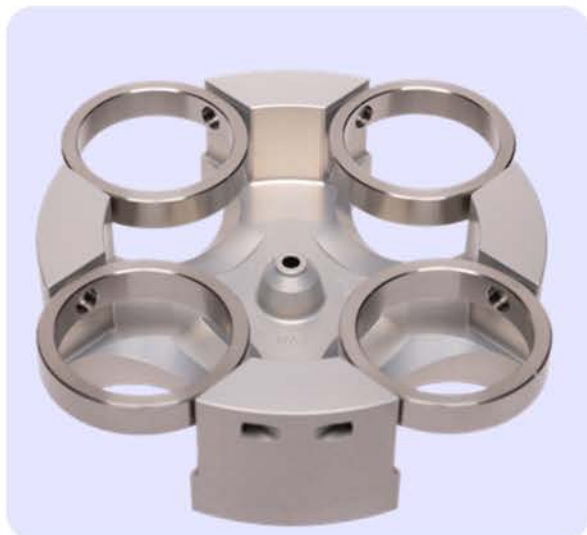
Part Number	Description
01604-00	Plain Capillary tubes pack 10 x 100
01603-00	Heparanised Capillary tubes pack 10 x 100
01503-00	Sealing Clay Pk 10
C-P-8011	Rim seal Gasket Pk 10 - <i>Replace regularly every 2 months</i>

## ACCESSORIES

Part Number	Description
01502-00	PCV Reader

## 4 PLACE SWING OUT ROTOR

For larger-volume samples where cell viability is critical, Centurion recommends the four-place swing-out rotor. It accommodates up to 4 × 125 ml tubes, with a maximum total capacity of 500 ml, and can spin up to 2,200 RCF.



*C-R-SO5506 with included rings.*



*C-R-SO5506 with included rings and example adaptor sold separately.*

Rotor	C-R-SO5506
Tube Size Max	48 x 98mm
RCF Range (g)	10-2,200 RCF
Maximum RPM	4000 RPM
Maximum Radius (cms)	12.3 cm
Sample Tube Angle °	0
Acceleration Time (secs)	30
Deceleration Time (secs)	30
Min. Temp @ Max Speed	0°C
Sealed Lid Included?	No
Spare Lid Part No.	C-BL-B5519
Autoclavable (frequency)	121°C (10)

Centurion offers a wide range of adaptors for the C-R-SO5506 rotor, compatible with different tube types, shapes, and sizes. Purchase of these adaptors is required for this rotor. Please refer to the following page to select the most suitable adaptors for your needs.

## ADAPTORS FOR C-R-S05506

### Tube Type: Micro with Cap. Shape: Point

Capacity	Size (mm)	Part Number	Historic Part No.	Tubes per Rotor
0.2ml	6 x 20	C-A-AM402-5	AM402-5	96
0.4ml	6 x 30	C-A-AM404-5	AM404-5	96
0.5ml	8 x 20	C-A-AM405-5	AM405-5	52
1.5ml	11 x 38	C-A-AM420-5	AM420-5	36
2.0ml	11 x 38	C-A-AM420-5	AM420-5	36

### Tube Type: Plain no Cap. Shape: Round

1ml	6 x 45	C-A-AR401-5	AR401-5	36
3ml	10 x 60	C-A-AR403-5	AR403-5	28
5ml	12 x 75	C-A-AR405-5	AR405-5	20
6ml	12 x 82	C-A-AR406-5	AR406-5	20
7ml	12 x 100	C-A-AR407-5	AR407-5	20
9/10ml	14 x 100	C-A-AR409-5	AR409-5	20
15ml	17 x 100	C-A-AR415-5	AR415-5	16
25ml	24 x 100	C-A-AR425-5	AR425-5	12
50ml	34 x 100	C-A-AR450-5	AR450-5	4
100ml	45 x 100	C-A-AR4100-5	AR4100-5	4
125ml	52 x 100	C-A-AR4125-5	AR4125-5	4

### Tube Type: Falcon with cap. Shape: Point

15ml	17 x 120	C-A-AF415-5	AF415-5	4
50ml	29 x 115	C-A-AF450-5	AF450-5	4

### Tube Type: Falcon with Cap. Shape: Square

12ml	17 x 100	C-A-AFS412-5	AFS412-5	8
15ml	17 x 120	C-A-AFS415-5	AFS415-5	4
25ml	25 x 90	C-A-AFS425-5	AFS425-5	4
30ml	25 x 110	C-A-AFS430-5	AFS430-5	4
50ml	29 x 115	C-A-AFS450-5	AFS4100-5	4

### Tube Type: Nalgene. Oakridge with Cap. Shape: Round

10ml	17 x 80	C-A-ANO410-5	ANO410-5	12
30ml	26 x 95	C-A-ANO430-5	ANO430-5	4
50ml	29 x 107	C-A-ANO450-5	ANO450-5	4
100ml	38 x 114	C-A-ANO485-5	ANO485-5	4

### Tube Type: Monovette. Shape: Square

1.1-1.4ml	8 x 82	C-A-AM4014-5	AM4014-5	40
2.7-3ml	11 x 82	C-A-AM403-5	AM403-5	40
2.6-2.9ml	13 x 81	C-A-AM429-5	AM429-5	28
4.5-5ml	11 x 108	C-A-AM445-5	AM445-5	32
4.5-5ml	15 x 92	C-A-AM450-5	AM450-5	20
7.5-8.2ml	13 x 106	C-A-AM479-5	AM479-5	24
9-10ml	16 x 108	C-A-AM490-5	AM490-5	16

### Tube Type: Vacutainer. Shape: Round

1.6-5ml	13 x 82	C-A-AV416-5	AV416-5	24
4-7ml	13 x 106	C-A-AV450-5	AV450-5	24
7-9ml	15 x 92	C-A-AV470-5	AV470-5	20
8.5-10ml	16 x 108	C-A-AV480-5	AV480-5	16

### Tube type: Vacuette. Shape: Round

1.6-5ml	13 x 82	C-A-AV416-5	AV416-5	24
4-7ml	13 x 106	C-A-AV450-5	AV450-5	24
7-9ml	15 x 92	C-A-AV470-5	AV470-5	20
8.5-10ml	16 x 108	C-A-AV480-5	AV480-5	16

## 8 PLACE SWING OUT ROTOR

For small samples requiring maximum cell viability, the eight-place swing-out rotor is an excellent choice and can be combined with reducers to suit on your capacity requirements.



C-R-SO5508 with C-B-1087 buckets, sold separately.

### C-R-SO5508 Rotor

Capacity	8 x 10ml
Tube size	17 x 100mm max
RCF Range (g)	10-2,150
Maximum RPM	4,000
Max Radius (cms)	12.3
Sample Tube angle °	0
Acceleration Time (secs)	15
Deceleration Time (secs)	15
Min. Temp @ Max Speed	0°C
Buckets Required	C-B-1087
Autoclavable (frequency)	121°C (10)

## REDUCERS - SET OF 4

Please find our range of reducers, compatible with the C-B-1087 buckets.

### Tube Type: Micro with Cap. Shape: Point

Capacity	Size (mm)	Part Number	Historic Part No.	Tubes per Rotor
0.2ml	6 x 20	C-RC-5508A & CRC-5508E	R8.620	1000
0.4ml	6 x 30	C-RC-5508A & C-RC-5508E	R8.630	1180
0.5ml	8 x 20	C-RC-5508B & C-RC-5508E	R8.820	1000
1.5ml	11 x 38	C-RC-5508E	R8.1138	1325
2.0ml	11 x 38	C-RC-5508E	R8.1138	1325



### Tube Type: Plain no Cap. Shape: Round

5ml	12 x 75	C-RC-5508E	R8.645	1500
6ml	12 x 82	C-RC-5508E	R8.1060	1500
7ml	12 x 100	C-RC-5508G	R8.1275	1825
9-10ml	14 x 100	C-RC-5508H	R8.1282	1825
10ml	17 x 100	NOT REQUIRED	R8.12100	2150
15ml	15 x 80	C-RC-5508F	R8.17100	1470



### Tube Type: Nalgene, Oakridge with cap. Shape: Round

10ml	15 x 80	C-RC-5508D	R8.1580	1500
------	---------	------------	---------	------



### Tube Type: Monovette. Shape: Square

1.1-1.4ml	8 x 82	C-RC-5508B & C-RC-5508E	R8.882	1700
2.7-3ml	11 x 82	C-RC-5508E	R8.1182	1470
2.6-2.9ml	13 x 81	C-RC-5508F	R8.1381	1470
4.5-5ml	15 x 92	C-RC-5508F	R8.1592	1470



### Tube Type: Vacutainer. Shape: Round

1.6-5ml	13 x 82	C-RC-5508E	R8.1382	1470
4-7ml	13 x 106	C-RC-5508H	R8.13106	1825
7-9ml	15 x 92	C-RC-5508F	R8.1592	1470
8.5-10ml	16 x 106	NOT REQUIRED	R8.16108	2150



## LOW SPEED FIXED ANGLE ROTORS

Centurion offers five low-speed fixed-angle rotors for the Small Centrifuges, available for 15 ml, 50 ml, or 100 ml sample sizes. All rotors can centrifuge up to 4,800 RCF, or 6,000 RPM.



C-R-FA5406. Optional sealed lid C-RL-5424HD sold separately.



C-R-FA5308 rotor with included sealed lid.



C-R-FA5308 rotor without included sealed lid.

Rotor	C-R-FA5412	C-R-FA5406	C-R-FA5324	C-R-FA5308	C-R-FA5100
Rotor Type	12 x 15ml	6 x 50ml	24 x 15ml	8 x 50ml	6 x 100ml
Tube Size Max	17 x 120mm	30 x 120mm	17 x 120mm	30 x 120mm	38 x 125mm
RCF Range (g)	10 -3,800	10-3,800	10-4,800	10-4,800	10-4,800
Maximum RPM	6,000	6,000	6,000	6,000	6,000
Max Radius (cms)	9.5	9.5	12	12	12
Sample Tube angle °	30	30	35	35	30
Acceleration Time (secs)	25	25	30	30	30
Deceleration Time (secs)	25	25	35	35	35
Min Temp @ Max Speed	4°C	4°C	-6°C	-6°C	-6°C
Available Reducers	RM05, RM10	RM15, RM25	RM05, RM10	RM15, RM25	RM15, RM25, RM50
Sealed Lid Included?	No	No	Yes	Yes	Yes
Spare Lid Part No.	C-RL-1440	C-RL-1440	C-RL-1720	C-RL-1720	C-RL-1720
Autoclavable (frequency)	121°C (10)	121°C (10)	121°C (10)	121°C (10)	121°C (10)

Reducers	C-RC-RM05	C-RC-RM10	C-RC-RM15	C-RC-RM25	C-RC-RM50
Capacity (ml):	5ml	10ml	15ml	25ml	50ml
Tube Size Max:	13 x 80mm	14 x 100mm	17 x 100mm	24 x 100mm	30 x 110mm



## HIGH SPEED FIXED ANGLE ROTORS

Centurion offers several high-speed fixed-angle rotors for the Small Centrifuges, available for 10 ml, 15 ml, and 50 ml sample sizes. All rotors have a maximum speed of 9,500 RCF, or 10,000 RPM.



C-R-FA5202 rotor with included sealed lid.



C-R-FA5202 rotor without included sealed lid.

Rotor	C-R-FA5202	C-R-FA5204
Rotor Type	8 x 15ml tube	4 x 50ml tube
Tube Size Max	17 x 120mm	30 x 115mm
RCF Range (g)	10-9,500	10-9,500
Maximum RPM	10,000	10,000
Max Radius (cms)	8.5	8.5
Sample Tube Angle °	60	60
Acceleration Time (secs)	180	180
Deceleration Time (secs)	25	25
Min. Temp @ Max Speed	0°C	0°C
Reducers Available	RM05, RM10	RM15, RM25
Sealed Lid Included?	Yes	Yes
Spare Lid Part No.	C-RL-1440	C-RL-1440
Autoclavable (frequency)	121°C (10)	121°C (10)

Reducers	C-RC-RM05	C-RC-RM10	C-RC-RM15	C-RC-RM25
Capacity (ml):	5ml 	10ml 	15ml 	25ml 
Tube Size Max:	13 x 80mm	14 x 100mm	17 x 100mm	24 x 100mm

## MICROTITER PLATE ROTOR

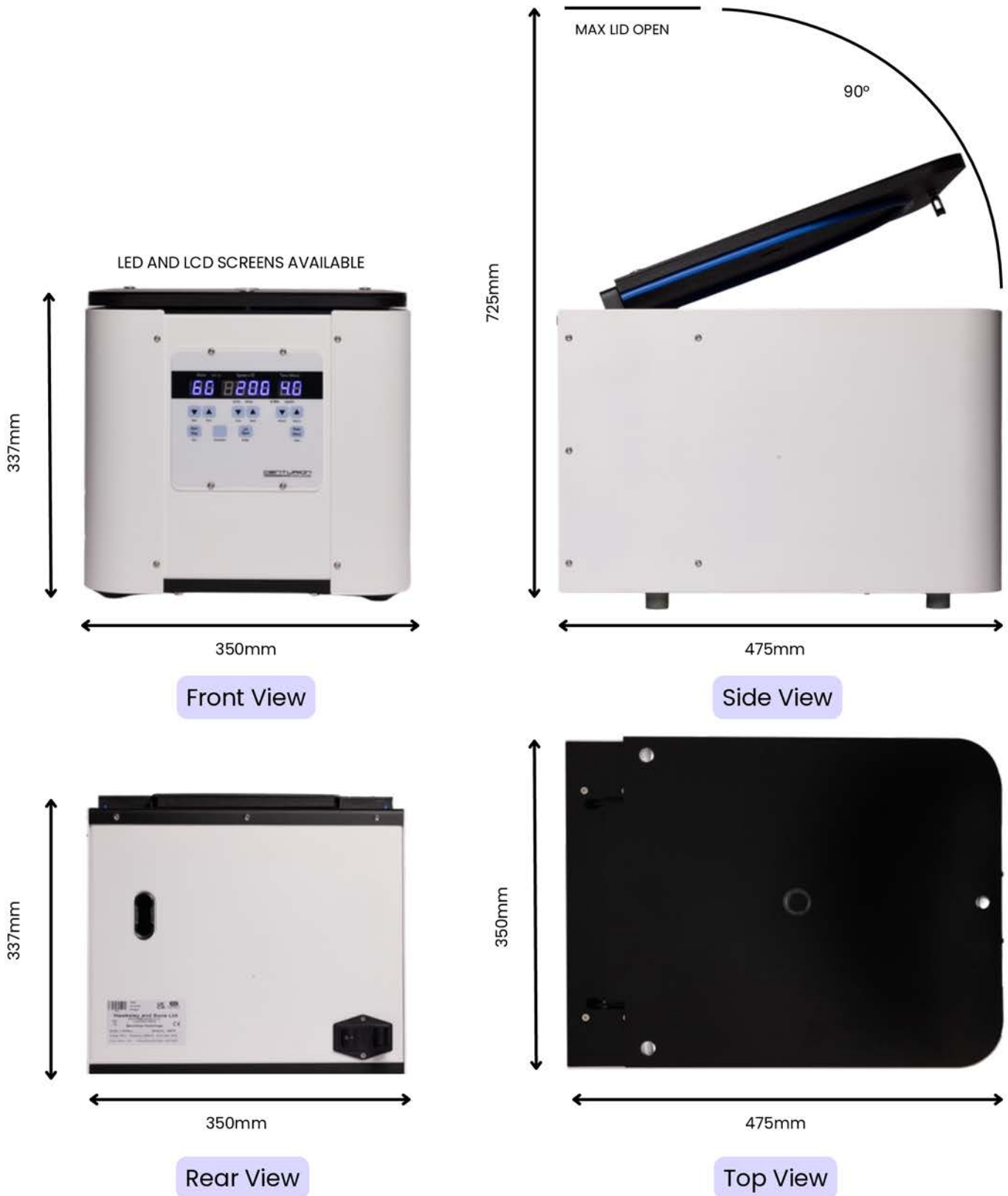
The Microtiter Rotor is a high-performance rotor for microplate centrifugation, ideal for ELISA, PCR, and other assay workflows. It offers rapid spin-down, low vibration, and secure plate clamping for reliable results, while its robust, corrosion-resistant construction ensures long-lasting, safe use in busy laboratories.



*C-R-MT5740 with included buckets.*

Rotor	C-R-MT5740
Buckets	Complete with buckets, Available with 4 x STD Plates
Tube Size	85mm x 128mm
RCF Range (g)	10-1700
Maximum RPM	3500
Max Radius (cms)	12.4
Sample Tube Angle °	0° (10)
Acceleration Time (secs)	25
Deceleration Time (secs)	25
Min. Temp @ Max Speed	0°C
Autoclavable (frequency)	121°C (10)

# SMALL AMBIENT CENTRIFUGE DIMENSIONS



## SMALL REFRIGERATED CENTRIFUGE DIMENSIONS

